

# Server Installation Guide

31 August 2023

VMware Carbon Black App Control 8.10

You can find the most up-to-date technical documentation on the VMware website at:

<https://docs.vmware.com/>

**VMware, Inc.**  
3401 Hillview Ave.  
Palo Alto, CA 94304  
[www.vmware.com](http://www.vmware.com)

Copyright © 2004-2023 VMware, Inc. All rights reserved. [Copyright and trademark information.](#)

# Contents

Preface	5
<b>1 Overview</b>	<b>6</b>
Other Carbon Black App Control Documentation	6
Community Resources	7
Contacting Support	8
Reporting Problems	8
<b>2 Preparing for Server Installation</b>	<b>9</b>
About the App Control Distribution	9
License Keys	10
Licenses for Optional Features	10
Installation Overview	11
SQL Server Account Configuration	12
SQL Server Memory Configuration	13
Installing the Platform Software	13
Network Requirements	14
Web Server Configuration	14
Supported Web Browsers	15
Data Export Options	15
<b>3 Installing the App Control Server</b>	<b>16</b>
Pre-installation Check	16
Installing the App Control Server Software	17
Installing a New App Control Server	18
Installing the Server with a Restored or Reconnected Database	30
<b>4 Upgrading from a Previous App Control Version</b>	<b>42</b>
Upgrade Installation Overview	43
Preparing to Upgrade	44
Check Supported Upgrade Paths	44
Backup the App Control Server Database	45
Disable Software Deployment Mechanisms	45
Stop SQL Background Jobs	45
Run the App Control Server Upgrade Installation	45
Upgrade Installation Checks	46
Upgrade Completion	48
Review Post-Upgrade Server Configuration	49

Agent Upgrade Status 50

## **5** Uninstalling the App Control Server Software 51

## **6** The App Control Console 53

Logging In to the Console 53

Logging Out of the Console 55

Changing the Administrator Password 55

Viewing User Activities in the Events Table 55

Using Help 56

# Preface

The *VMware Carbon Black App Control Server Installation Guide* provides information for system or network administrators who will install the server software and other components of VMware Carbon Black App Control.

Staff who install the software should be familiar with networking concepts and have experience with the Windows operating system and SQL Server management. In addition, if your site will use features that integrate the Carbon Black App Control Server and Active Directory, administrators and installers should be familiar with Active Directory concepts and use.

## Intended Audience

The *VMware Carbon Black App Control Server Installation Guide* is intended for any person installing or managing the App Control Server or the App Control Agents.

The App Control Agent can be installed on Windows, Mac/OS X, and Linux operating systems, so the installer or administrator responsible for installing and managing agents should be familiar with installing software on the supported client systems at your site. See the [VMware Carbon Black App Control Agent Installation Guide](#) for detailed agent installation instructions.

# Overview

# 1

This document provides instructions regarding the installation and initial configuration of the server.

This document is organized as follows:

Chapter	Description
1 <a href="#">Chapter 2 Preparing for Server Installation</a>	Provides an installation overview and background information helpful to know before you begin installing the App Control Server.
2 <a href="#">Chapter 3 Installing the App Control Server</a>	Explains how to install (or upgrade) and start the App Control Server software.
3 <a href="#">Chapter 6 The App Control Console</a>	Explains how to log in to the App Control Console.

## Note

- This guide, which focuses on App Control Server installation, does not include full instructions for installing third-party products, such as Windows Server, SQL Server, or products and services integrated through the App Control Connector. For any third-party product that you install separately for use with App Control, see the documentation that came with the product.
- Instructions for uploading agent installers to the server and installing the App Control Agent on computers to be managed by the App Control Server are in the [VMware Carbon Black App Control Agent Installation Guide](#).

Read the following topics next:

- [Other Carbon Black App Control Documentation](#)
- [Community Resources](#)
- [Contacting Support](#)

## Other Carbon Black App Control Documentation

You will need some or all of the following documents to accomplish App Control tasks not covered in this document. Unless otherwise noted, all documents are available at <https://docs.vmware.com/en/VMware-Carbon-Black-App-Control/index.html>.

Some of these documents are updated with every new released build while others are updated only for minor or major version changes:

- *VMware Carbon Black App Control Server Operating Environment Requirements* – Describes the hardware and software platform requirements for App Control Server, the SQL Server database that stores App Control data, and the App Control Agent.
- *VMware Carbon Black App Control SQL Server Configuration* – Describes some of SQL best practices as well as pre- and post-installation tasks that are necessary to ensure proper database operation.
- *VMware Carbon Black App Control Agents OERs* – Describes the currently supported agents and the operating systems on which they are supported. These documents are maintained on [VMware Docs](#).
- *VMware Carbon Black App Control User Guide* – Provides full information about configuring and operating the App Control Server.
- *VMware Carbon Black App Control Release Notes* – Provide information about new features, corrective content, and known issues with that release. These documents are specific to the version and build of App Control Server or agent. See: [VMware Docs](#)
- *VMware Carbon Black App Control Events Guide* – Provides a detailed inventory of events recorded by the App Control Server and includes instructions for integrating event data with third-party SIEM systems via Syslog.
- *VMware Carbon Black App Control API documentation* – Documentation for the App Control REST API can be found at <https://developer.carbonblack.com/reference/enterprise-protection> . See Appendix B, “App Control API,” in *Using App Control* for more information about Carbon Black API documentation.

In addition to the documents listed above, the [Carbon Black User Exchange](#) includes other, more specialized documentation that may be of use in planning or maintaining your App Control Server installation. Use the “Documentation and Downloads” button on the App Control page in the User Exchange to search for these documents.

## Community Resources

In addition to being a source for user documentation, the Carbon Black User Exchange website at <https://community.carbonblack.com> provides access to information shared by Carbon Black customers, employees and partners. It includes information and community participation for users of all Carbon Black products.

The [Carbon Black User Exchange](#) includes information and community participation for users of all Carbon Black products.

When you login to this resource, you can:

- ask questions and provide answers to other users’ questions.
- “vote” to bump up the status of product ideas.

- participate in the Carbon Black developer community by posting ideas and solutions or discussing those posted by others.
- view the training resources available for Carbon Black products.

You must have a login account to access the User Exchange. Contact your Technical Support representative if you need to get an account.

## Contacting Support

Please view our Customer Support Guide on the User Exchange for more information about Technical Support: <https://community.carbonblack.com/t5/Support-Zone/Guide-to-Carbon-Black-Customer-Support/ta-p/34324>

For your convenience, Carbon Black Technical Support is available through several channels:

- **Web:** Carbon Black User Exchange - <https://community.carbonblack.com>
- **Support Home Page:** <https://www.carbonblack.com/resources/support/>
- **Email:** [cb-support@vmware.com](mailto:cb-support@vmware.com)
- **Phone:** 877.248.9098

## Reporting Problems

When you call or e-mail technical support, please provide the following information to the support representative:

Required Information	Description
Contact	Your name, company name, telephone number, and email address
Product version	Product name and version number
Hardware configuration	Hardware configuration of the server or computer the product is running on (processor, memory, and RAM)
Document version	For documentation issues, specify the version of the manual you are using. The date and version of the document appear on the cover page, or for longer manuals, after the Copyrights and Notices section of the manual.
Problem	Action causing the problem, error message returned, and any other appropriate output
Problem severity	Critical, serious, minor, or enhancement



# Preparing for Server Installation

# 2

This section provides an installation overview for App Control, including preparation requirements and instructions for upgrading App Control from a previous version.

You may receive additional upgrade documentation from your Carbon Black Support representative, and, if so, you should have it available for the upgrade process.

The separate *VMware Carbon Black App Control Operating Environment Requirements* document for this release provides guidelines for hardware and software required for App Control. Your environment must meet these requirements before you begin the procedures described in this document.

The App Control Console includes a System Health Page that provides reports on the state of your system. A prime purpose of these indicators is to monitor compliance with the Operating Environment Requirements and report any non-compliance so that you can remedy it. See “Monitoring System Health” in *VMware Carbon Black App Control User Guide* for more information.

Read the following topics next:

- [About the App Control Distribution](#)
- [Installation Overview](#)
- [Network Requirements](#)
- [Web Server Configuration](#)
- [Supported Web Browsers](#)
- [Data Export Options](#)

## About the App Control Distribution

Carbon Black supplies the App Control installation program as a download. New sites will also receive a license key to be used during installation.

Table 2-1. App Control Distribution Contents

Contents	Description
App Control Software	<p>The App Control server installation files.</p> <p><b>Note</b> You upload App Control Agent installers packages from the Carbon Black User Exchange after the server is installed.</p>
Documentation	<p>The App Control Console includes online Help describing product features and procedures, including how to install the agent on endpoints. You can view the Help contents page by clicking the question mark button in the top right in the main console menu. Context-sensitive help can be launched by clicking the question mark button lower on the page in the panel for a particular console page.</p> <p>PDF versions of this and other user documentation (PDF and HTML) can be downloaded at <a href="https://docs.vmware.com/en/VMware-Carbon-Black-App-Control/index.html">https://docs.vmware.com/en/VMware-Carbon-Black-App-Control/index.html</a>.</p>

## License Keys

App Control can be licensed at two primary feature levels:

- **App Control Visibility:** This level provides all of the App Control file and event tracking and reporting capabilities, but does not include support for control features such as file bans and device blocking.
- **App Control Suite :** This provides both Visibility and Control capabilities.

Licenses are based on the number of agents running at each level. You can mix licenses on the same server, having, for example, 20 Visibility licenses and 50 Suite licenses. In addition, you can purchase upgrades to bring Visibility licenses up to full Suite level.

**Important** During a new server installation, you will be prompted for a license key. Have this key available before you begin installation. A new installation completed without a license key is a full-featured, 7-day evaluation version (without special options). You can add or upgrade a license key after installation, on the **System Configuration** page of the App Control Console.

Upgrade installations and reconnections to existing App Control databases do not require a new license key for completion, but if one is provided by Carbon Black, apply it during the installation process. For instructions on adding licenses after installation, see the “System Configuration” chapter in the *VMware Carbon Black App Control User Guide* guide or online Help.

## Licenses for Optional Features

In addition to determining the number of licensed agents and their mode, the license key can add optional features to your App Control installation, including the App Control Connector for Network Security Devices and the File Upload feature.

To use these features, be sure to obtain the correct license.

## Installation Overview

App Control includes server and agent components. You install the server software on standard Windows-Server-based computers, and it can be run on a virtual machine.

The server installation procedure handles all operating system configuration except for IIS. For IIS configuration, follow the information in the [App Control Web Server Platform: Support Server](#) topic in the respective *Server Operating Environment Requirements* for the release.

You can install agent software on server, desktop, and laptop computers, and on POS (point-of-sale) systems. It may be installed on Windows, Mac, and Linux systems that meet the requirements in the *Server Operating Environment Requirements* document for this release and the relevant *Agent Operating Environment Requirements* document on [VMware Docs](#). The agent provides security rules to endpoint computers and enables connected systems to interact with the App Control Server for ongoing management.

---

### Note

- Installing App Control agents on containers is not supported.
- Agent installers are created through a two-step process:
  - Agent installer and rule packages are available on the [Release Information and Downloads](#) page and must be uploaded to the App Control Server.
  - Once the installer package is on your server, separate downloadable agent installers are created dynamically for each security policy configured on your server.

Instructions for uploading agent packages and installing agents are in the [VMware Carbon Black App Control Agent Installation Guide](#).

---

An App Control Server installation follows these summary steps:

#### **Step 1: Determine your appropriate hardware and database configuration.**

The App Control Server and its database may be set up on a single system. Depending upon your own preferences and the number of clients you will manage with App Control, you may require a dedicated system for a database server and/or for a Syslog server. You also may install the server and agents in a virtualized environment. See the *Server Operating Environment Requirements* document to determine the right choices for your environment.

#### **Step 2: Procure the required hardware for the App Control Server.**

#### **Step 3: Install Windows Server, IIS, and .NET on the App Control Server hardware.**

Use a clean, US English Windows Server installation with all the latest patches from Microsoft. Then install the Internet Information Services (IIS) version supplied with your Windows Server, using the configuration described in the *Server Operating Environment Requirements* for this release.

Also, make sure that Microsoft .NET Framework 4.8 is installed with the default settings and the latest patches.

**Step 4 - option 1: Install your own licensed copy of SQL Server (US English) on the same system before you install App Control.**

Follow the SQL Server configuration instructions in the *Server Operating Environment Requirements* and *VMware Carbon Black App Control SQL Server Configuration* documents. In particular, note whether the number of endpoints you plan to manage requires the use of option 2. The SQL Server must be a US English version.

- or -

**Step 4 - option 2: To use a remote database server, procure the hardware, operating system, and your own licensed copy of SQL Server, then prepare the system.**

Connect the SQL Server hardware to the App Control Server hardware by a minimum latency, gigabit backbone. The SQL Server must be a US English version.

**Step 5: Install and configure the App Control Server software.**

The installation procedure is described in this document. Configuration is described in *VMware Carbon Black App Control User Guide*.

**Step 6: Upload the App Control rule and agent installer packages to the server and install agents on endpoints.**

See *VMware Carbon Black App Control Agent Installation Guide* and *VMware Carbon Black App Control Rules Installer Guide* for these procedures.

## SQL Server Account Configuration

The user account that will access a remote App Control database should have the following permissions:

Permission	Required	Reason
<b>Create Any Database</b>	Yes, during installation.	This permission is required during product installation, and can be revoked after installer finishes.
<b>View Server State</b>	Yes	Allows collection of App Control Server performance statistics
<b>View Any Definition</b>	Yes	Allows collection of App Control Server performance statistics
<b>Alter Trace</b>	Yes	Allows collection of on-demand SQL trace for performance diagnostics
<b>Alter Server State</b>	No (Recommended)	Allows server to reset performance counters on daily basis, and provides better performance diagnostics

Note that many of these permissions allow server metrics to be collected by Carbon Black for monitoring of the internal health of the server and to provide diagnostics in case of SQL database issues. This information is very important in helping Carbon Black support your server installation, and also provides server performance data that may contribute to future product improvements. Contact your Carbon Black representative if you would like more information about data collection from your server.

---

**Important** In addition to the permissions shown in the table, the App Control service account must remain **db\_owner** after the server is installed.

---

## SQL Server Memory Configuration

If you are using a single-tier configuration (App Control Server and SQL Server on the same system), you should configure the SQL Server to use shared memory for the connection to gain the maximum performance benefit of the single-tier architecture.

Use of TCP introduces unnecessary latency into the system.

Follow these configuration guidelines to make the SQL Server use shared memory for its connection to the App Control Server when they are on the same machine:

- Do not use a FQDN to specify the SQL Server name – it causes the server to use TCP for the connection. To make the SQL Server connection use shared memory instead, use a local server name.
- Make sure that Shared Memory protocols are enabled for both network and client configuration in the SQL Configuration Manager.

## Installing the Platform Software

Follow these guidelines for installing or upgrading platform software for the App Control Server:

- 1 Ensure that the server is a dedicated, trusted computer that uses the NTFS file system, not FAT or FAT32.
- 2 If you are repurposing another computer to use as the App Control Server, reformat the disk. During reformatting, select NTFS (the default file system).

---

### Important

- Commercial servers commonly bundle vendor-specific server-management utilities with Windows Server. If you install the App Control Server on a server platform that is bundled with such utilities, there might be unexpected interactions between them.
  - If you intend to use any server-hardening procedures on this server, contact Carbon Black Support to confirm that the App Control Server will run in the environment you create.
  - Apply server-hardening procedures before installing the App Control Server.
-

- 3 If the operating system is not preinstalled, follow the standard Microsoft instructions for installing it. Be sure you are using the US English version, and use the US date format of mm/dd/yyyy. Carbon Black recommends that you select the default installation options.
- 4 If you have a network domain and you want to use the App Control Server's Active Directory integration, add the server to the domain.
- 5 Install Internet Information Services (IIS) — you may need the Windows Server media. See [Web Server Configuration](#) for the required IIS configuration.

---

**Important** Once IIS is installed, you cannot change the server name and still have IIS function correctly. If you need to change the server name for any reason, contact Carbon Black Support.

---

- 6 If you currently have an earlier version of Windows than those listed in the App Control *Operating Environment Requirements* document for this release, upgrade to the required version and service pack.
- 7 Install Microsoft .NET Framework 4.8 on the App Control Server. If necessary, go to <http://www.microsoft.com/downloads> and choose the latest version for download.
- 8 Download and install any current patches for each element of the platform software.
- 9 If you are running AppLocker on the system where the App Control Server will be installed, either temporarily disable AppLocker or be sure it uses only default rules. If AppLocker is configured with customer-specific rules, the server installation could fail. An AppLocker-related installation failure is reported as an “unknown error,” and install logs (or debug view) show that installer was not able to expand its own installer files in the temp folder and wasn't able to execute the "unzip.exe" utility.

## Network Requirements

See the *Operating Environment Requirements* document for full network details. In addition to the requirements described there:

- If you intend to use the Active Directory integration features of the App Control Server, the server must be a member of a domain. See the *Carbon Black App Control User Guide* for more information on Active Directory integration features.
- Carbon Black recommends that your server have access to a remote network share for backup purposes, or that you make other reliable backup arrangements.

## Web Server Configuration

The App Control Server works with the following configurations:

- IIS 8.0 on Windows Server 2012 R2
- IIS 10 on Windows Server 2016 / 2019 / 2022

Do a clean IIS installation before you install the App Control Server. In normal use, the web server starts at boot time. The App Control Server does not support substitution or co-installation of any other web servers.

Configure the IIS Roles Manager according to the instructions in the *Operating Environment Requirements* for this release.

---

**Note** Once IIS is installed, you cannot change the server name and still have IIS function correctly. If you need to change the server name for any reason, contact Carbon Black Support.

---

## Supported Web Browsers

You access App Control features through a Web-based user interface called the console. Although other browsers with HTML frame support should work, these App Control-certified browsers are recommended:

- Microsoft Edge, latest version
- Mozilla Firefox, latest version
- Chrome, latest version
- Safari, version 13

## Browser Configuration

All browsers must be enabled for JavaScript to access to the console and online Help.

## Data Export Options

Carbon Black App Control provides data export options including:

- downloadable reports in CSV format , read-only views into certain elements of the database
- Syslog messaging that exposes relevant event data and statistics for programmatic analysis
- logging of App Control events to an external SQL Server
- external views into the database (Live Inventory SDK)
- export of events and other data to third-party analytics platforms, such as Splunk

See the separate manual, *VMware Carbon Black App Control User Guide* , for more information on these topics (also available as online console help). See the *VMware Carbon Black App Control Events Guide* for more on exports of event data to syslog.

# Installing the App Control Server

# 3

This section explains how to install or upgrade the App Control Server.

When you have successfully completed the server installation procedures, see the [VMware Carbon Black App Control Agent Installation Guide](#) for agent installation and upgrade instructions.

Read the following topics next:

- [Pre-installation Check](#)
- [Installing the App Control Server Software](#)

## Pre-installation Check

Before installing the App Control Server, ensure that:

- The server on which you will install it meets the requirements in the *Server Operating Environment Requirements* for this App Control Server release.
- IIS is installed and configured as described in the *Server Operating Environment Requirements* for this App Control Server release.
- SQL Server is installed according to the requirements in the *Server Operating Environment Requirements* for this App Control Server release.



- If you are running AppLocker on the system where the App Control Server will be installed, you have either temporarily disabled it or made sure it uses only default rules.

---

**Important**

- **Install SQL First** -- SQL Server must be installed before you install the App Control Server. See the separate *Server Operating Environment Requirements* document for information about supported versions and configuration of SQL Server. Have the SQL Server location, instance (if any), and login information available during App Control Server installation.
- **Authentication** -- During installation, you will have a choice to use Windows authentication or SQL authentication to configure access to the SQL Server by the App Control Server. Carbon Black strongly encourages using a specific Windows Domain account for installing and logging in to the App Control Server, and using Windows authentication for database access. For either authentication method, the account you use to access the database must be added to SQL Server with “sysadmin” checked in the Server Roles.

For two-tier installations, you will need to enter a second set of credentials for console and API access that preferably do NOT have the sysadmin role.

---

If you use dedicated SQL Server hardware, the App Control Server installer also installs the required SQL Server drivers locally on the App Control Server machine. The drivers installed are from SQL Server 2008 R2 and should be able to communicate with the any of the supported SQL Server versions listed in the *Server Operating Environment Requirements*.

## Installing the App Control Server Software

The server installer uses standard installation dialogs. During installation, you specify system configuration information for the server and optionally provide your own web-server certificate. You must log in as a Windows administrator to install the App Control Server.

The system on which you install the server must have an IP address that is visible to all computers running the App Control Agent, with a fully qualified DNS domain name or alias. In addition, to use Active Directory integration features without special configuration, the App Control Server must be installed in the same AD forest as:

- users you plan to allow App Control Console access via their AD login
- computers and users whose AD information you plan to use for automatic security policy assignment

---

**Important** If you need to have the App Control Server in a different AD forest than computers and users you want to use in App Control integrations, contact Carbon Black Support for special instructions.

---

If you are installing a completely new App Control Server, follow the steps in [Installing a New App Control Server](#).

If you are installing new App Control Server software with a backup database from a previous version, skip to [Installing the Server with a Restored or Reconnected Database](#).

If you are upgrading from a previous version of the App Control Server (including Bit Platform and Parity Servers), skip to [Chapter 4 Upgrading from a Previous App Control Version](#). You also might receive a supplemental document with newer instructions for an upgrade from your Carbon Black Support representative.

---

**Important** Several App Control Server administrative features are disabled by a reinstallation or upgrade of the server. When an upgrade installation is complete, log in to the console and re-enable the ones you use:

- System backup is disabled. To re-enable, go to the Advanced Options tab on the System Configuration page.
- Automatic upgrades of agents are disabled. To re-enable, go to the Advanced Options tab of the System Configuration page. This should be done only after determining and configuring an upgrade plan that avoids excess load on the server and network. You should also check the Carbon Black User Exchange for new agent and rule versions to upload to your server.
- See [Review Post-Upgrade Server Configuration](#) for more details about re-enabling features after an upgrade.

---

## Installing a New App Control Server

Use these instructions for a completely new installation of App Control, with a new database (no restorations of or reconnections to an existing database).

### To install a new App Control Server:

- 1 Log in using an account with local Windows administrator credentials. If you plan to use Windows Authentication to login to a remote App Control database, install the App Control Server using an account that has been added to SQL Server with “sysadmin” checked in the Server Roles. Carbon Black strongly encourages using a specific Domain account for installing and logging in to the App Control Server, and for database access, to simplify control of both database and Active Directory permissions.

---

**Important** Do not change the privileges of the account used to install the server after installation. This account must continue to have local administrator privileges for the server to function properly, and will also be used for server upgrades.

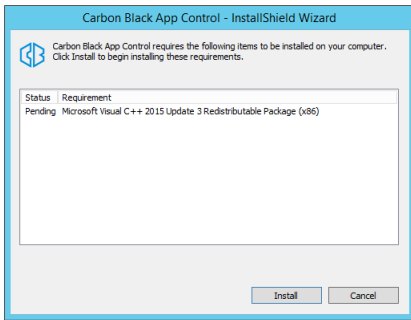
- 2 Make the server installation file available to the installation computer (either by download or inserting media in an accessible location).
- 3 Run the installer in either of the following ways:
  - a To install on a local server, double-click the `ParityServerSetup.exe` file to start the installation program. Continue to the next step.

- b To install from a remote desktop, copy the `ParityServerSetup.exe` file to the installation computer and execute the file.
- 4 If the installer detects that required Microsoft redistributable packages are not present, a dialog box listing those packages appears. Click **Install** on the dialog to install the packages and continue with the App Control installation.

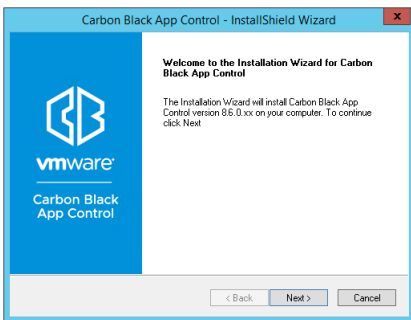
---

**Note** Installation of redistributable packages may require a reboot.

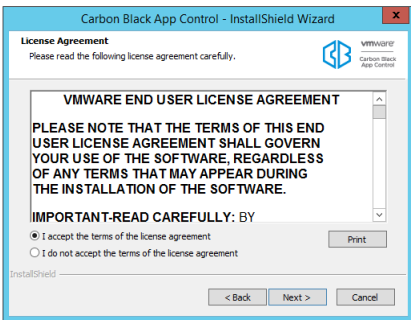
---



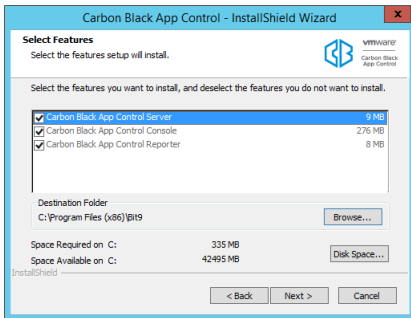
If no missing packages were detected, or when the installation is completed, the Welcome dialog appears.



- 5 On the Welcome page, click **Next** . The License Agreement screen appears.



- 6 Review the software license agreement. You must agree to the license terms to install the App Control Server. When you click **I accept** and continue, you agree to all terms of use. To continue, click the **Next** button. The Select Features dialog appears.



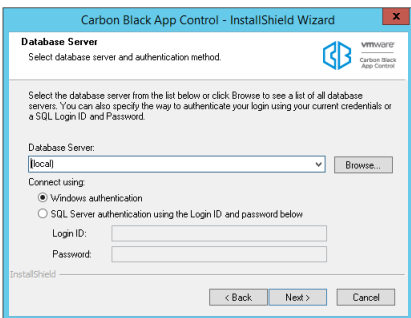
- 7 The **Select Features** screen provides information about the App Control features being installed, the installation folder, and the space required and available for installation:
- App Control Server, App Control Console, and App Control Reporter are always installed — they cannot be deselected. The console is the web interface to the server. The reporter is the service that connects the server to Carbon Black File Reputation, which provides access to a database of information about files and threats. Reporter, which runs as a Windows service, also provides other essential reporting capabilities, including collection of support information for the server.
  - Either keep the default installation folder (which differs from 32-bit to 64-bit systems) or click **Browse** and navigate to the folder in which you want to install the server. If you don't choose the default, use a path that has only valid ASCII characters, not Unicode. When you have chosen the folder, click Next.

---

**Note** At this point in the installation, the installer program checks to be certain that it can write to the folders and registry locations needed. If any issues are found, they (and their paths) are listed in a dialog, and you must resolve them before continuing the App Control installation.

---

- 8 The Database Server screen appears next. It includes two configuration choices:



- In the Database Server field, enter the name of the SQL server, and (if any), its instance name, you are using for App Control data. If the SQL Server and App Control Server are on the same system, use a local name (not an FQDN) to allow use of shared memory for the connection between the two. See [SQL Server Memory Configuration](#) for more details.

- b Specify the database connection method using one of the following:

**Note** Your choice here determines how access to the SQL Server by App Control will be authenticated, both during and after the installation.

- **Windows Authentication** (i.e. with the user doing the App Control installation)
- **SQL Server Authentication**

If you choose SQL Server Authentication, provide the Login ID and Password.

- c When you have entered all database information, click **Next**.

**Important** For either authentication method, the user must have been given the “sysadmin” Server Role in SQL Server.

**Note** If the Database Server field points to a remote SQL Server, the following prompt

Carbon Black App Control - InstallShield Wizard

**SQL User for Carbon Black App Control**

Specify the SQL account to be used to run the Carbon Black App Control database. This user will also be the owner of the IIS application pool associated with App Control.

Local System Account  
 Specify Account

User name:

Password:

InstallShield

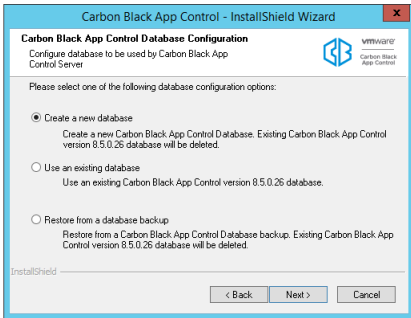
< Back   Next >   Cancel

displays.

You must specify a Windows account that both this server and the remote SQL Server can authenticate.

This account will be used by IIS to access SQL Server for all required database operations by the console and API. Consequently, this account should not have sysadmin privileges on SQL Server. If it does, a confirmation prompt displays requiring you to confirm that decision.

- 9 The App Control Database Configuration Options screen appears next.



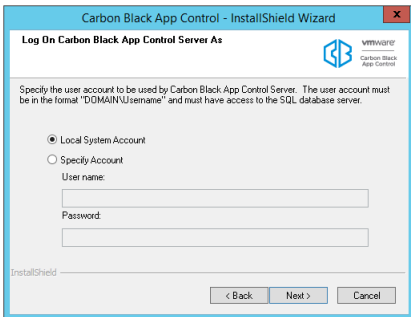
On this dialog, choose **Create a new database** if you are installing the App Control Server for the first time, then click **Next**.

---

**Note** The other database configuration options, Use an existing database and Restore from a database backup, are described in [Installing the Server with a Restored or Reconnected Database](#).

---

- 10 On the **Log on Carbon Black App Control Server As** screen, choose the logon account to be used by the App Control Console. This will also be the account used to install future patches and upgrades. You can choose one of two modes of logging in:



- **Local System Account:**

Selecting this option configures App Control to use the built-in Windows System account.

- **Specify Account:**

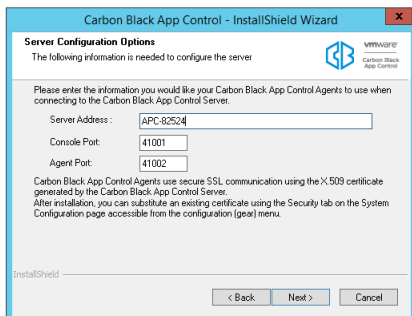
Selecting this option activates the **Username** and **Password** fields so that you can provide account information. As the screen notes, the account you provide must be in the format DOMAIN\Username and have full access to the SQL database server. The default for this choice is the currently logged in user. You cannot use “\Username” without a domain or a dot before the backslash

### Note

- Carbon Black strongly encourages using the Specific Account option to simplify control of database and Active Directory permissions. In general, the installer should be run by this same Domain account.
- For local SQL Server Express databases, the currently logged in user must be the same as the user specified in the Logon Information installation dialog, and the user must have the “sysadmin” Server Role. If you enter a different user, an error message appears and you must re-enter the current user.
- To use a Domain account to access a *remote* SQL database, you must use that account to run the installer and enter it as a Specific Account in the dialog above. The account must have the “sysadmin” Server Role in SQL Server. Use of an invalid login account causes server installation to fail later in the process; you will need to reinstall.

When you have provided logon information, click **Next**.

- 11 The Server Configuration Options screen displays next.



From the **Server Configuration Options** screen, review the **configuration settings**. In the Server Address field, the preferred address for the server is a fully qualified DNS name or alias that is resolvable by all computers running App Control Agent. Although not recommended, if the server is assigned a static IP address that will not change at reboot

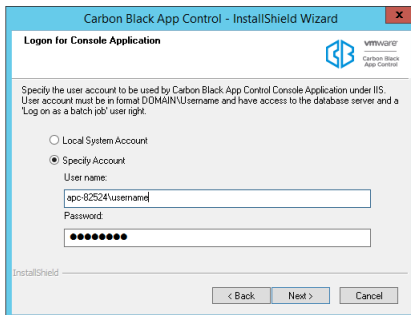
time, you can keep the default IP address selected for the server. The installation program automatically supplies the correct information for the installation computer. The Console Port, which is used for communications between the server and its browser console, is 41001. The Agent Port, which is used for SSL communication with App Control Agents, is 41002.

### Note

- Carbon Black strongly recommends the use of a fully qualified DNS name or alias for Server Address whenever possible. Use of a CNAME (alias) may provide more flexibility and reliability.
- If you use multiple NICs, make sure the FQDN you use in the Server Configuration screen refers to the address of the card(s) you want the agents to connect to.
- An SSL certificate is automatically generated to protect communications between the server and its agents. If the Common name of the server does not match the server name configured here, server and agents will be unable to communicate correctly. After installation is complete, you can replace this certificate with an existing certificate on the **Security** tab of the **System Configuration** page in the console.

After reviewing the server configuration and made any necessary changes, click **Next**.

- 12 If you selected **Specify Account** in the (App Control Server) Logon Information screen (step 10), another Logon Information screen appears next, for *Login for Console Application*. This screen allows you to specify different user credentials to start the IIS process for App Control Console, the web-based user interface for the server.



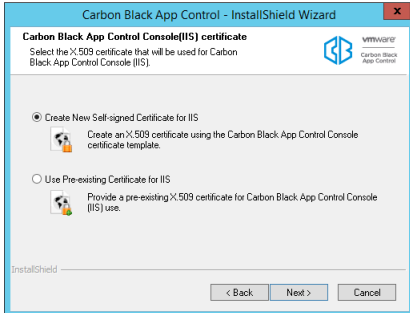
- Local System Account: Choose this option to configure the server to use the built-in Windows system account to start the IIS process for the console.
- Specify Account: Choose this option to activate the Username and Password fields so that you can provide account information. As the screen notes, the account you provide must be in the format DOMAIN\Username. You cannot use “\Username” without a domain or a dot before the backslash.

**Note** If you use an account other than the current user, a warning dialog will be shown: “The App Control Server installer is unable to validate whether the specified account is able to access the SQL database server. Are you sure you want to continue?” If you are certain the account you provided is valid, choose **Yes**.



Click **Next**.

- 13 The App Control Console (IIS) Certificate screen appears next. Choose the digital certificate that will appear to App Control Console users. You either create a certificate using a template provided by Carbon Black or substitute your company's certificate.



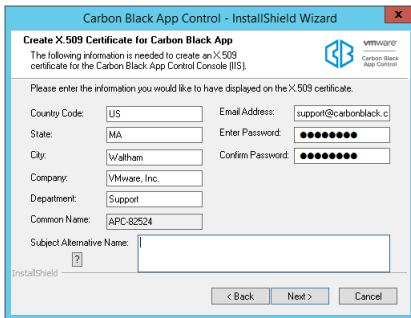
- a If you do not have your own certificate, choose **Create Certificate**. This allows you to create a Carbon Black self-signed certificate. You can either leave Carbon Black's default information or supply certificate information that identifies your own organization instead. Self-signed certificates will generate warning boxes when you log in to the App Control Console using Internet Explorer or Firefox, although Firefox will allow you to permanently accept the certificate to eliminate future warnings. To create a certificate, choose **Create Certificate**, click the **Next** button, and skip to Step 14.
- b To substitute your own certificate, choose **Use Pre-existing Certificate**, click the **Next** button, and skip to Step 15.

---

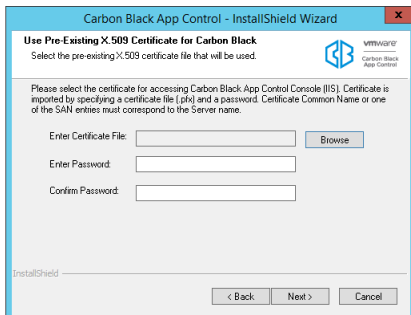
### Note

- The Carbon Black self-signed certificate cannot be universally trusted because it is not created through a trusted provider such as Verisign or Thawte. This is why it generates a warning on login. While this doesn't interfere with App Control operation, you may want to acquire your own, trusted certificate to avoid the warning.
  - Self-signed certificates with a validity period greater than 20 years are not usable. If necessary, create and use a new certificate with a shorter validity.
- 

- 14 If you chose **Create Certificate**, the Create X.509 Certificate screen appears.

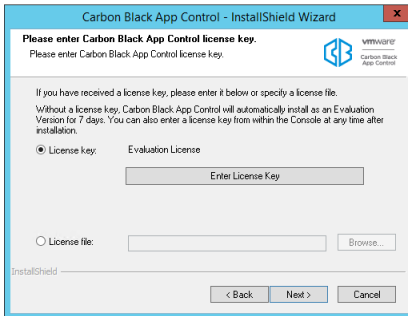


- a By default, all certificate details correspond to Carbon Black name and address data. Please replace them with details of your company. The default password is 'password'. Carbon Black recommends that you change it, and keep a record of your new password so it can be retrieved for later use. The Common Name field defaults to the IP Address or DNS Name of the server; it cannot be changed. If the server is reachable by multiple DNS names, you can use the Subject Alternate Name field to specify the alternate names. When the certificate is validated against a computer, it is validated against a Common Name or one of the Subject Alternative Name entries (if they exist). If both are present, names in the Subject Alternative Name field have priority.
  - b When all fields are filled in as you want, click **Next** to create the certificate and move to the License Key screen (step 16).
- 15 If you chose **Use Pre-existing Certificate**, the Use Pre-existing X.509 Certificate screen appears. Enter the required information:



- a Click the **Browse** button next to the Enter Certificate File field, navigate to the PFX (PKCS.12) certificate file you want to use, and click **Open** when you have located the file. The filename appears in the certificate file box.
- b Enter the password for the certificate, and re-enter it in the confirmation field.
- c When you have entered the certificate file and the passwords, click **Next** to validate the certificate file with the password.
- d A dialog box appears allowing you to use the same certificate for Agent-Server communications. Choose **Yes** to use the same certificate or **No** if you want the App Control installer to generate a different, self-signed certificate for Agent-Server communications (you can modify this certificate or choose a new one through the App Control Console later). After you make your choice, the License Key screen appears.

- 16 On the License Key screen, you enter the license key provided by Carbon Black. This key determines how many agents you can run at each of the two fundamental feature levels: Visibility-Only or Visibility-and-Control. It may also include permission for optional features.



You have two options for entering the key:

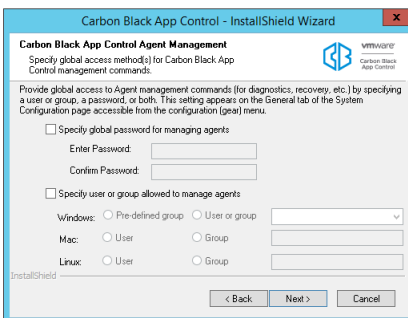
- **License key:** Select this option to cut and paste the license key into a window (for example, from an email message or other communication).
- **License file:** Select this option to provide the name and path to a license file containing the key. License key files have the file extension .lic. When you select this option, the Browse button is activated so that you can locate and select the license file using the standard Windows Choose File dialog.

---

**Note** If no license key is entered here, the server is installed with a 7-day evaluation license. After installation, you can update the license at any time from the System Configuration page of the console.

---

When you have provided either the license key text or a license file, or have chosen not to enter a key, click **Next**. The App Control Agent Management screen appears.



- 17 On the App Control Agent Management screen, you can enable global access to agent management commands used for diagnostics, recovery, and other special situations.

Although you can configure this after installing the server, it is highly recommended that you configure this feature before installing agents since your choice (or lack of one) is built into the agents when you install them. It is especially important to set up a global access method if you will have agents that are offline frequently or at all times. The choices are:

- a Specify a global password for managing agents: Check this box, then enter and confirm a password, if you want to enable access to agent management commands on all agents via a single password. Password must be between 1 and 64 characters long, be in the ASCII character set, and must not contain the following DOS special characters: | > & % ( ) @ . [ ] { } ; : ^ = ! ' " ` ~ ,
- b Specify a user or group allowed to manage agents for each platform (Windows and Mac are supported at this time): Check this box if you want to enable access to agent management commands by choosing a pre-defined group from a menu (for Windows) or by entering a user or group name used at your site. Provide a user or group for each agent platform you have in your environment.

---

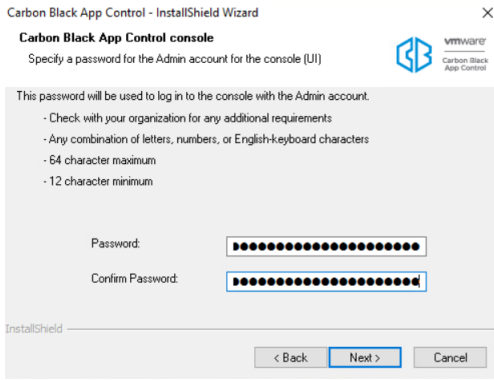
#### Note

- If you define both a user/group and a password, either access method is sufficient on its own.
  - If you plan to manage clients from computers running Vista or Windows 7, use of pre-defined Windows groups for access privileges is not recommended because Windows UAC may not provide the expected membership in a group.
  - See “Configuring Agent Management Privileges” in the *VMware Carbon Black App Control User Guide* guide for more information about configuring agent management access.
- 

- c Click **Next**.

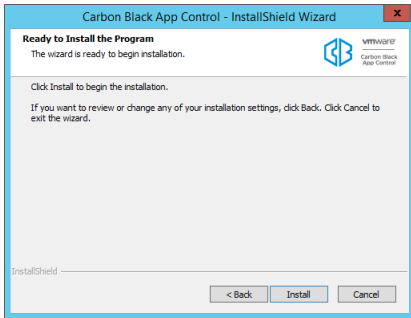
18 You must specify the admin account password for the console user interface, and then click **Next**.

- You can use any combination of letters, numbers, or English-keyboard characters.
- Must have a minimum of 12 characters.
- Maximum limit of 64 characters.

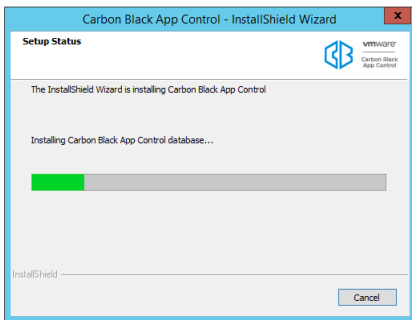


**Note** Use this password to log onto the console for the first time.

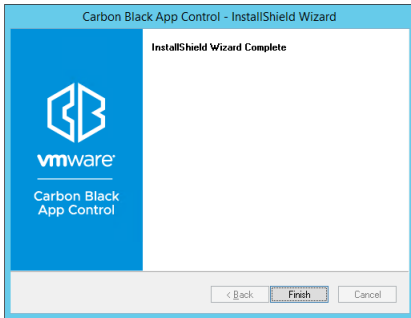
- 19 If you are satisfied with your installation choices, click the **Install** button on the Ready to Install screen:



- 20 App Control Server installation begins. There is a status box overlaying the main dialog to show the progress of SQL script execution. The main dialog also has a status indicator for the overall installation.



- 21 When the InstallShield Wizard Complete screen appears, the installation is complete.
  - a In some cases, you will need to restart the server computer after installation is completed, and the dialog will include an option to restart now. Choose to restart now unless you need to complete some other activity on this computer.
  - b Click the **Finish** button. App Control Server, which runs as a service, begins to operate after you click this button. Installation logs are placed in the App Control installation folder (for example, C:\Program Files (x86)\Bit9).



Once you have finished installing the server, you can log in via the console, upload rules and agent installers from the User Exchange, configure security policies and rules, and install agents on your endpoints. Login basics are described in this document in [Chapter 6 The App Control Console](#). Other topics are covered in *VMWare Carbon Black App Control User Guide* which is available as a PDF download or through the console as context-sensitive help.

## Installing the Server with a Restored or Reconnected Database

The App Control Server installation program provides the option of reconnecting to an existing database. In addition, you can restore a database from backup, if necessary, and then reconnect to that.

Consider the following information before you begin:

- If your database server and the App Control Server are on the same machine, you can reconnect to an existing database or restore the database from backup using the procedure below. The installation program prompts you for all necessary information.
- If you have a remote App Control database and that database is operational, you can reconnect to it using the procedure below. The installation program prompts you for all necessary information.
- To restore your database from a local backup created using the native App Control backup feature, you can choose the Restore option in the installation dialogs. If you used any other backup mechanism, use that mechanism to restore the database first and then use the Reconnect option in the App Control installation dialogs.
- Restore is not an option for remote databases. If you want to restore a App Control database on a remote system, contact Carbon Black Support.

- To upgrade from a previous version of the App Control Server, see [Chapter 4 Upgrading from a Previous App Control Version](#) instead of this section. You may also receive supplemental field upgrade instructions from Carbon Black Support.

---

**Important**

- When you reinstall or upgrade the App Control Server, system backup and automatic agent upgrades are disabled. External event logging may also be disabled. You can re-enable them on the console System Configuration page Advanced Options and Events tabs.
- When restoring from or reconnecting to a database, if you imported any certificates as part of your original installation, those certificates are in the database, and can be used when you restore or reconnect. You will need the password for each certificate to reuse them.
- You will have a choice during installation to use Windows authentication or SQL authentication for access to the SQL Server by the App Control Server. For either choice, the account used to access the database must be added to SQL Server with “sysadmin” checked in the Server Roles.
- If you left a App Control Agent on the system where you are installing the App Control Server, the agent could block installation of the new server or cause faulty installation. Disable tamper App Control on this agent, which will require you to have the access password or user account you provided for client management during the previous server installation or configuration. Although the installation program warns you if an agent is present in some cases, the agent is not always detected. Check the Windows Control Panel to see if a App Control (or Bit9) agent is present.
- If you are running AppLocker on the system where the App Control Server will be installed, either temporarily disable AppLocker or be sure it uses only default rules.

---

**To install the App Control Server and reconnect to (or restore a backup of) a database:**

- 1 Log in using an account with local Windows administrator credentials. If you plan to use Windows Authentication to login to a remote App Control database, install the App Control Server logged in with an account that has been added to SQL Server with “sysadmin” checked in the Server Roles. Carbon Black strongly encourages using a specific Domain account for installing and logging in to the App Control Server, and for database access, to simplify control of both database and Active Directory permissions.

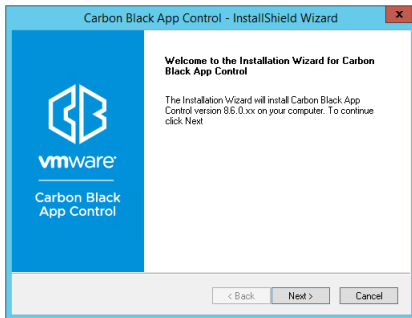
---

**Important** Do not change the privileges of the account used to install the App Control Server after installation. This account must continue to have local administrator privileges for the server to function properly, and will also be used for server upgrades.

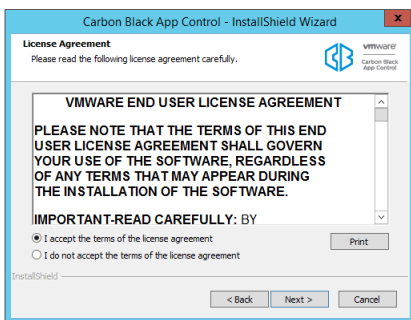
---

- 2 Make the server installation file available to the installation computer (either by download or inserting media in an accessible location).
- 3 Run the installer in either of the following ways:
  - To install on a local server, double-click the `ParityServerSetup.exe` file to start the installation program. Continue to the next step.

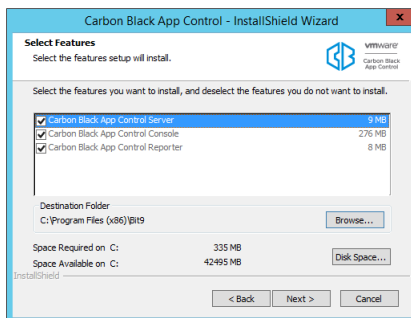
- To install from a remote desktop, copy the `ParityServerSetup.exe` file to the installation computer and execute the file. Continue to the next step.



4 From the Welcome page, click **Next** . The License Agreement screen appears.



5 Review the software license agreement. You must agree to the license terms to install the server. When you click the **I accept** button and continue, you agree to all terms of use. To continue, click the **Next** button. The Select Features dialog appears.



- Although they have checkboxes, App Control Server, App Control Console, and App Control Reporter are always installed — they cannot be deselected. The console is the web interface to the server. The reporter is the service that connects the server to Carbon Black File Reputation, which provides access to a database of information about files and threats. Reporter, which runs as a Windows service, also provides other essential reporting capabilities, including collection of support information for the server.
- Either keep the default installation folder (which differs from 32-bit to 64-bit systems) or click **Browse** and navigate to the folder in which you want to install the server. If you don't choose the default, use a path that has only valid ASCII characters, not Unicode. When you have chosen the folder, click **Next**.



- 6 At this point, the installation program checks that the server environment meets the requirement for App Control Server installation. If no issues are found, you will not see any additional dialogs, and the Database Server screen will appear (step 8). Warning dialogs appear under the following conditions:
- If files are detected in the installation directory, you will see a warning dialog. You can continue the installation without removing the files, but should examine the files to see whether you want to copy and/or remove them. In most cases, these will be log files from App Control Connector appliances or services.
  - If a App Control Agent is detected on the App Control Server computer, you will see a dialog stating:

“The system is protected by the Carbon Black App Control Agent.

The installer will verify the necessary permissions to updat the Carbon Black App Control Server. You might see Carbon Black Notifiers if required permissions are not available.”

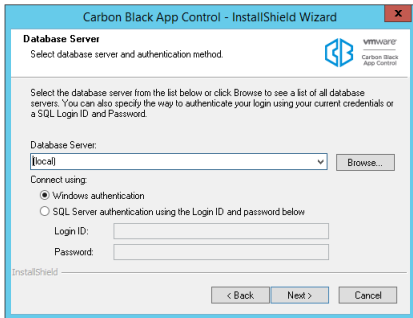
If this dialog appears, click OK to dismiss it and initiate the system check that determines whether the agent and/or other factors would prevent successful installation of the server.
  - If the system check finds any issues that would prevent successful server installation, a dialog box appears describing those issues. If this happens, correct the issues and then click Next (you do not need to exit the installation while you remediate the problems). When you click Next, the system check runs again, and if all issues are remedied, the installation moves to the next step. If there are still outstanding issues, they will be listed again and you will have another opportunity to correct them. If necessary, click Cancel to exit the installation dialogs.

---

**Note** If you did not disable tamper App Control in advance and are prompted to do so here, you must have a client management access password or user account from the previous server installation or configuration. In the reconnect/restore case, you cannot disable tamper App Control through the console.

---

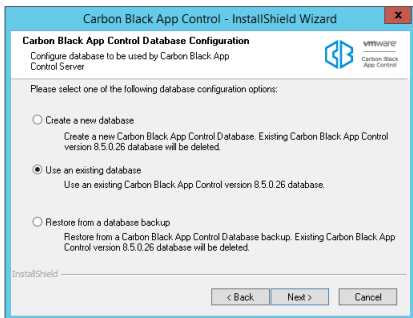
- 7 The Database Server screen appears next. It includes two configuration choices:



- a Database Server is the name of the SQL server, and optionally, its instance. Enter the server name and instance name (if any) you use to connect to the server. If the database server is local, you will be able to reconnect, and if necessary, restore from backup files you have on the server. If the database server is remote, you will be able to reconnect only.
- b With the Connect Using radio buttons, choose Windows Authentication (i.e. authenticate with the user doing the App Control Server installation) or SQL Server Authentication. If you choose SQL Server Authentication, provide the Login ID and Password. Your choice here determines how access to the SQL Server by the App Control Server will be authenticated, both during and after the installation.
- c When you are finished entering database information, click **Next**.

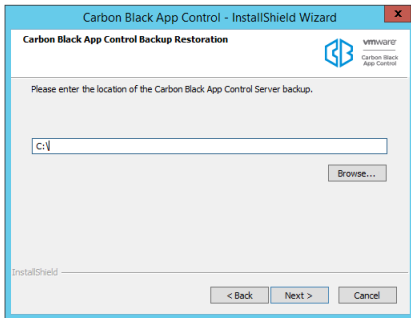
For either authentication method, the user must have been given the “sysadmin” Server Role in SQL Server.

- 8 The App Control Database Configuration Options screen appears. The options on the screen depend upon whether a App Control database was detected at the location you provided on the previous screen:



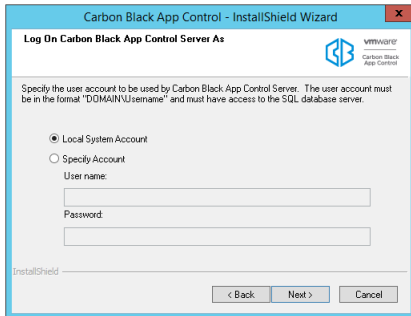
- a If the installation program detects a usable App Control database, your choices are to create a new database (and delete the existing database) or use an existing database and upgrade it to this release. Choose Use an existing database to preserve your App Control (including previous Bit9 Platform and Parity) data and upgrade the database, and then click Next. If you choose this option, a warning appears reminding you to backup your App Control database before proceeding. If you have recent backups, click Yes to continue, and skip to step 12.

- b If the database location you provided is local, the Restore from a database backup option is enabled. Choose this option to restore your previous database from a backup file, and click Next to continue. This option can be used only to restore backup files created by App Control.
- 9 If you chose **Restore from a database backup**, the App Control Backup Restoration screen appears.



- 10 On the **Backup Restoration** screen, enter the path to the folder containing the backup database, or use the Browse button to locate it. Click Next. If the backup is from a previous version, a message box appears explaining that the database will be upgraded. When you click **OK** on this box (or if it doesn't appear), another message box appears telling you that backups will be disabled after the database restoration. When you have clicked **OK** on each of the message boxes, the App Control Server Backup Information screen appears.
- 11 Examine the information on the Server Backup Information screen. Note that if you are restoring from a backup from a previous version of App Control (including Bit9 Platform or Parity), that database will be updated to the version matching your installer if you proceed. Use the **Back** button if you want to use a backup other than the one described on this screen.
- 12 When the information on the Server Backup Information screen is correct, click Next to proceed. If there are certificates stored in the database, you are prompted to decide whether to re-use any stored certificates. The dialog will specify whether there is a console certificate only or certificates for both the console and the server.
- 13 If you want to re-use the certificate(s), click **Yes** in the dialog.
  - If you are restoring a database from backup, you will be prompted for the certificate passwords *after* the database is restored.
  - If you are reconnecting to a database, the Restore Pre-Existing X.509 Certificate for the App Control Console screen appears.
- 14 The database can contain either one or two certificate files, and there will be a dialog for each one found. Enter a password and click **Next** in each dialog. By default, the verified password from the first dialog is pre-populated in the second dialog (if there is one). If there is a password problem, an error message will indicate that immediately and give you the chance to re-enter the password. If a valid password is provided but another certificate restoration problem occurs during the installation, an error message appears and a self-signed certificate is generated instead so that installation may continue.

- 15 After you complete the certificate dialogs, the Logon Information screen appears. On this screen, choose the logon account to be used by the App Control Server. You can choose one of two modes of logging in:



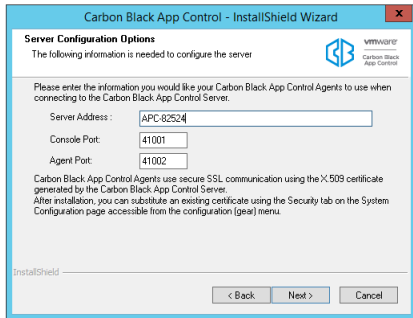
- The Local System Account radio button instructs the installation to configure the server to use the built-in Windows system account.
- The Specify Account radio button activates the Username and Password fields so that you can provide account information. As the screen notes, the account you provide must be in the format DOMAIN\Username and have full access to the SQL database server. The default for this choice is the currently logged in user. You must include a domain name or a dot before “\Username”.

---

### Note

- Carbon Black strongly encourages using a specific Domain account and the Specific Account option to simplify control of both database and Active Directory permissions. In general, the installer should be run by this same Domain account.
- In this release, an SSL certificate is automatically generated to protect communications between the server and its agents. If the Common name of the server does not match the configured server name (or one of the names if the certificate used SAN), then server and agents will be unable to communicate correctly.
- For local SQL Server Express databases, the currently logged in user must be the same as the user specified in the Login Account installation dialog. If you attempt to enter a different user, an error message appears and you must re-enter the current user. The logged in user must have been given the “sysadmin” Server Role in SQL Server.
- In the case of remote databases, the installation program cannot confirm the validity of the account you provide. Note that if you provide an invalid login account, server installation will be unsuccessful and you will need to reinstall.

- 16 When you have provided logon information, click Next. The Server Configuration Options screen appears.



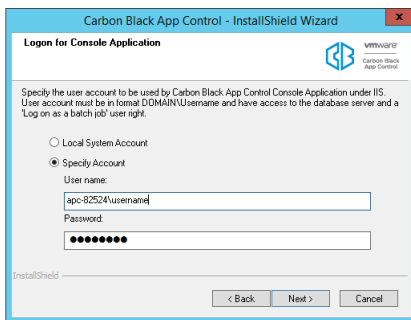
- 17 From the **Server Configuration Options** screen, review the **configuration settings**. In the Server Address field, the preferred address is a fully qualified DNS name (or alias) that is resolvable by all computers running the App Control Agent. Although not recommended, if the server is assigned a static IP address that will not change at reboot time, you can keep the default IP address selected for the App Control Server. The installation program automatically supplies the correct information for the installation machine. Console Port, which is used for communications between the server and its user interface, is 41001. Agent Port, which is used for communication with agents, is 41002.

---

### Note

- Carbon Black strongly recommends the use of a fully qualified DNS name for Server Address whenever possible. Use of a CNAME (alias) may provide even more flexibility and reliability.
  - If you use multiple NICs , make sure the FQDN you use in the Server Configuration screen refers to the address of the card(s) you want the agents to connect to.
  - If you are reconnecting to an existing App Control database, and you enter a Server Address other than the one you used previously, a dialog appears asking you to choose one of the two. If the new address is actually a different server, click Yes to modify the database with the new name. If the new address is an alias for the address currently in the database, click No to use the existing address. If you use the new address (i.e. click Yes), existing agents will not be able to reconnect to the server unless you create a DNS alias between the new and old names. If you are unsure of your choice or you made an error entering the name, click Cancel to return to the configuration screen.
- 
- 18 If you are reconnecting to an existing App Control database and you enter a Server Address other than the one you used previously, a dialog appears asking you to choose one of the two:
- If the new address is a different server, click Yes to modify the database with the new name. Note, however, that if you use the new address (i.e. click Yes), existing agents will not be able to reconnect to the server unless you create a DNS alias between the new and old names.
  - If the new address is an alias for the address currently in the database, click No to use the existing address.

- 19 If you are reconnecting to an existing database and you had Carbon Black File Reputation (Formally CB Collective Defense Cloud) activated, another dialog appears if you are not using the same App Control Server name as previously used with this database. You will be asked, “Do you want to generate a new key for CB Threat Intel?”
- If you are cloning this database as a new instance for a new server, click **Yes** . This might be the case if you have been using an early version of a release and want to use the same database for a newer version.
  - If you are reinstalling the same server as previously connected to the database, and if no other server is using the same database server name, choose **No** .
- 20 If you chose Specify an Account in the (App Control Server) Logon Information screen (step 12), another Logon Information screen appears next, for the App Control Console under IIS. Otherwise, go to step 21.



This screen allows you to specify a different logon for the App Control Console, the web-based user interface for the server.

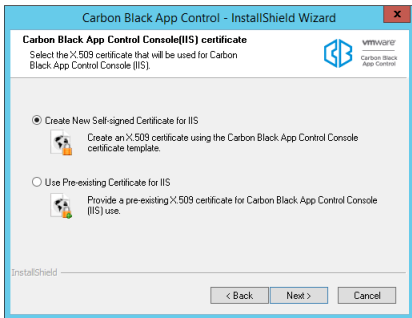
- Choose **Local System Account** to configure the server to use the built-in Windows system account for console logons.
- Choose **Specify Account** to activate the Username and Password fields so that you can provide account information. As the screen notes, the account you provide must be in the format DOMAIN\Username. You cannot use “\Username” without a domain or a dot before the backslash.

---

**Note** If you use a logon other than the current user, a warning dialog will be shown: “The App Control Server installer is unable to validate whether the specified account is able to access the SQL database server. Are you sure you want to continue?” If you are certain the account you provided is valid, choose Yes.

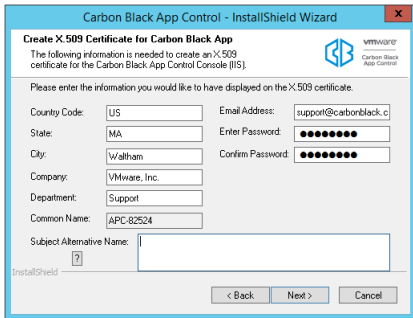
---

- When you have provided console logon information, click Next. If you restored certificates in a previous step, skip to step 24.
- 21 If there were no certificates stored in the database, or if you chose not to restore them in a previous step, the Certificate Options screen appears. From the **Certificate Options** screen, choose the digital certificate that will appear to console users. You either create a certificate using a template provided by Carbon Black or substitute your company’s certificate.



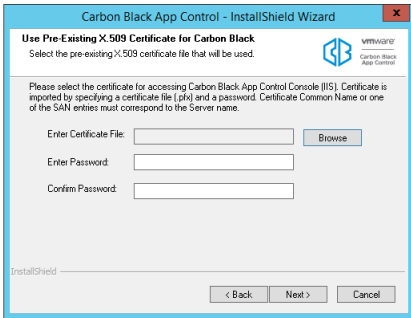
- If you do not have your own certificate, choose **Create Certificate**. This allows you to create a Carbon Black self-signed certificate. Self-signed certificates will generate warning boxes when you log in to App Control Console using Internet Explorer or Firefox, although Firefox will allow you to permanently accept the certificate to eliminate future warnings. To create a certificate, choose Create Certificate, click the Next button, and skip to Step 22.
- To substitute your own certificate, choose Use Pre-existing Certificate, click the Next button, and skip to Step 23.

22 If you chose Create Certificate, the Create X.509 Certificate screen appears.



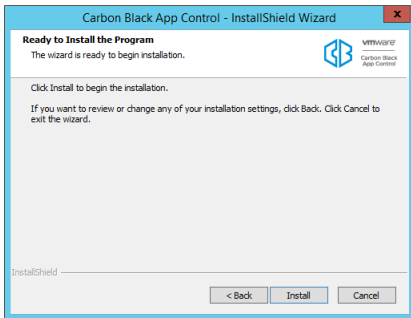
- a By default, all certificate details correspond to Carbon Black name and address data. Please replace them with details of your company. The default password is 'password'. Carbon Black recommends that you change it, and keep a record of your new password so it can be retrieved for later use. The Common Name field defaults to the IP Address or DNS Name of the App Control Server; it cannot be changed. If the App Control Server is reachable by multiple DNS names, you can use the Subject Alternate Name field to specify the alternate names. When the certificate is validated against a computer, it is validated against the Common Name or one of the Subject Alternative Name entries (if they exist). If both are present, names in the Subject Alternative Name field have priority.
- b When the information you want is in all fields, click Next to create the certificate and skip to step 24.

23 If you chose Use Pre-existing Certificate, the Use Pre-existing X.509 Certificate screen appears. Enter the required information.



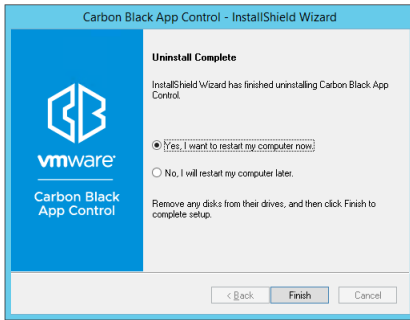
- a Click the Browse button next to the Enter certificate file field, navigate to the PFX (PKCS.12) certificate file you want to use, and click Open when you have located the file. The filename appears in the certificate file box.
- b Enter the password for the certificate, and re-enter it in the confirmation field.
- c When you have entered the certificate file and the password, click Next. The Ready to Install screen appears.

24 If you are satisfied with your installation choices, click the **Install** button.



- 25 App Control Server installation commences, and an installation status bar shows progress. When the InstallShield Wizard Complete screen appears, the installation is complete.
  - a In some cases, you will need to restart the server computer after installation is completed, and the dialog will include an option to restart now. Choose to restart now unless you need to complete some other activity on this computer.
  - b Click the **Finish** button. App Control Server, which runs as a service, begins to operate after you click this button. Installation logs are placed in the App Control installation folder (for example, C:\Program Files (x86)\Bit9).





---

**Note** Agent installers and rules are distributed separately from the App Control Server. Check the Carbon Black User Exchange to get the latest packages and upload them to your server once it is installed.

---

# Upgrading from a Previous App Control Version

# 4

Before upgrading to your Carbon Black App Control server, you must ensure that your existing server is at a supported version/patch level. Please refer to the Supported Upgrade Paths section in the Release Notes for this release.

---

**Important** You must backup the App Control database before running an upgrade. Some database upgrade failures are non-recoverable. Be sure you have a backup no more than one day old.

Dialogs during the upgrade process will warn you if your database backup is not recent (or its status cannot be determined). Proceeding in these cases is not recommended.

---

In addition to backing up your server, you should consider the following requirements and recommendations before performing an upgrade:

- Changing the App Control Server name at upgrade is not recommended, especially if you use your own distribution methods to upgrade App Control Agents. Consider using a CNAME for the server to avoid having to change the name.
- App Control Server upgrades must be run as the App Control Server service *user account* that was configured during server installation. You can determine the name of this account by opening the Windows Task Manager and clicking the Services button in the bottom right corner. The name in the Log On As field next to the server must be used (either by *login* or *runas*) to install the upgrade.
- If you are upgrading the server on a system that is protected by a App Control Agent, disable tamper App Control on that agent prior to installing the upgrade. The upgrade installation program normally warns you if a App Control rule or third-party software is blocking access to a folder or registry location that the server installer must access to complete the upgrade. However, the best practice is to disable tamper App Control in advance in case the blocking condition is not identified. In this case, be certain to re-enable tamper App Control as soon as the server upgrade is completed.
- If you are running AppLocker on the system where the App Control Server will be installed, either temporarily disable AppLocker or be sure it uses only default rules.

Read the following topics next:

- [Upgrade Installation Overview](#)

- [Preparing to Upgrade](#)
- [Run the App Control Server Upgrade Installation](#)
- [Review Post-Upgrade Server Configuration](#)
- [Agent Upgrade Status](#)

## Upgrade Installation Overview

Upgrading to this version of App Control involves the following high-level steps, most of which are described in more detail later in this section:

- Read through the separate *Server Operating Environment Requirements* specific to this version of App Control to be sure your server platform meets the current hardware and software requirements for this release. When you upgrade, the first dialog in the installation program is a reminder to view the new OER. It provides a link to the OER on the customer portal (you will need your customer portal login to access the OER).
- Read through this upgrade section to get a full overview of the upgrade process.
- Contact Carbon Black Support for any recent changes to upgrade procedures, or for advice on special cases, including strategies for getting to this server version from out-of-support versions of App Control.
- Backup the App Control Server database. Do not proceed with the upgrade without a recent backup since database upgrade failures are non-reversible.
- Disable third-party agent deployment mechanisms (such as SCCM).
- Stop any other activity (including backup jobs) or user access on the SQL Server.
- If there is an App Control Agent on the system hosting the App Control Server, disable tamper App Control on that agent. You can do this on the Computer Details page for this system in the App Control Console.
- Either log in as the App Control Server service user account that was configured during server installation or use *runas* that user to install the upgrade.
- Use the server installer program (ParityServerSetup.exe) for all upgrades unless otherwise directed by Carbon Black representatives. There is not a separate installer for patch releases and hotfixes. See the Release Notes for any special installation considerations for your release.
- Wait for automatic post-installation server updates to complete. After an upgrade is finished and the installation dialog is closed, upgrade-related tasks are performed in the background. Depending on your system performance and the extent of the upgrade, these tasks might take long enough that you could experience console login failures. These should be temporary.
- If you have an agent installed on the same system as the server and you disabled tamper App Control, re-enable it.

- Make any needed System Configuration changes to the server.
- Check the User Exchange for new agent package and rules files and upload them to your server if available. Updates to agents and rules have been separated from server installation to allow for greater update flexibility. See the *Carbon Black App Control Agent Installation Guide* and the *Carbon Black App Control Rules Installer Guide* for a detailed description of uploading these files to your server.
- If you distribute agents using your own deployment mechanism, upgrade agent distribution points and re-enable deployment mechanisms.
- If you plan to upgrade agents using the App Control Console, re-enable the upgrade features.

---

**Important** When the App Control Server is upgraded from one major version to another, ongoing enhancements to “interesting” file identification require rescanning the fixed drives on all agent-managed computers. These upgrades may also require a new inventory of files in any trusted directories to determine whether previously ignored files are now considered interesting. For some upgrades, this process can involve activity similar to agent initialization, and may cause considerable input/output activity. This could take less than an hour or last for many hours, depending on the number of agents and files.

For both App Control-managed upgrades and third-party distribution methods, Carbon Black recommends a phased upgrade of agents to avoid an unacceptable impact on network and server performance.

See the *Carbon Black App Control Agent Installation Guide* for full agent installation and upgrade procedures.

- 
- For agent upgrades, reboot on systems that prompt you to do so. This should only be necessary for certain systems running Windows XP or Windows 2003.
  - If you have used Syslog / SIEM integrations (such as QRadar and ArcSight) with previous versions of this product, consult the *VMware Carbon Black App Control Events Guide* for this release to prepare your configuration for any required changes.

---

**Note** Changing the server name at upgrade is not recommended, especially if you use your own distribution methods to upgrade App Control Agents. Consider using a CNAME for the server to avoid changing the configured name in App Control.

---

## Preparing to Upgrade

Before performing the upgrade, you should review the following and perform any applicable tasks.

### Check Supported Upgrade Paths

Before upgrading the App Control Server, be sure that your existing server is at a version listed in the supported upgrade paths in the requisite version of the Release Notes.

Before upgrading the server software, ensure all agents on all systems are currently using a supported version of their respective agent software. See the *VMware Carbon Black App Control Installation Guide* guide for details on agent upgrades.

## Backup the App Control Server Database

You must backup the App Control Server database before running the server installer to do an upgrade. Some failures of the database portion of the server upgrade are non-recoverable, and if you haven't backed up recently, you will lose data.

Carbon Black recommends that you use your own backup mechanism to back up the App Control database. However, if you have not backed up the database and need to use the built-in mechanism, go to the **Advance Options** tab on the App Control Console System Configuration page and enable backups.

---

**Important** System Backup does not backup IIS certificates. Please do a separate backup of IIS certificates. Store the backups on a system other than the App Control Server.

If you used the App Control (Bit9) backup mechanism, imported server certificates signed by a certificate authority are included in the backup. Self-signed certificates are not, and backups of self-signed certificates are of limited value.

---

## Disable Software Deployment Mechanisms

Before commencing the server upgrade, please disable any software deployment mechanisms, such as SCCM, used to distribute App Control Agent.

After the server upgrade completes and you have had an opportunity to update their respective distribution points with the upgraded agent installers, you can enable the software deployment mechanisms.

## Stop SQL Background Jobs

Because the App Control database is updated during a server upgrade, no other database jobs should be running.

This includes background jobs such as database maintenance and backup activity. Stop all of these jobs, and confirm that no one else is using the database before initiating the server upgrade.

## Run the App Control Server Upgrade Installation

Use this procedure to upgrade the App Control server.

### To upgrade the App Control Server:

- 1 Make the server installer files available to your App Control Server.
- 2 Launch the ParityServerSetup.exe application to validate and upgrade the server components.

## Upgrade Installation Checks

Upon execution of the upgrade, the upgrade installation program checks that the server environment meets the requirements for installation of this server version.

There are two important checks that might produce warnings after you initiate the upgrade:

- **Blocked Access Warning** – If the App Control Agent is installed on the system, a dialog box appears reporting that the installer will check to confirm that it has access to the necessary locations for an upgrade.

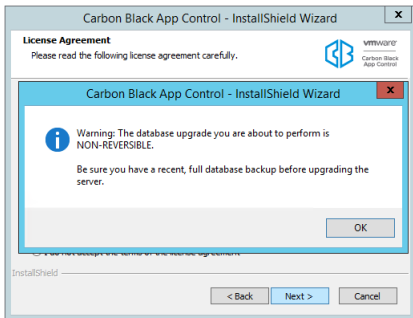
*"The system is protected by the Carbon Black App Control Agent. The installer will verify the necessary permissions to update the Carbon Black App Control Server. You might see Carbon Black Notifiers if required permissions are not available."*

If the system check finds that the agent or any other system software is blocking access to folders or registry locations needed by the installer, the issues will be listed in a dialog, and you will have the opportunity to remedy them and continue with the upgrade. When you correct the issues listed, click the Next button on the dialog to run the system check again and (if all issues are corrected) proceed with the upgrade.

It is possible, although uncommon, that you will be prompted during installation to disable tamper App Control on the server's agent. In this case, be certain to re-enable tamper App Control as soon as the server upgrade is completed, and do not disable tamper App Control unless prompted.

- **Database Backup Warnings** – App Control Server upgrades include updates to your App Control database. Some situations can cause failure of the database update scripts, and some of these failures are unrecoverable. You must backup your database before an upgrade to make sure you can restore your most recent data. The upgrade installer checks to see whether a recent backup can be found, and displays different dialogs depending upon what is found:
  - In all cases, an informational dialog is displayed warning that a recent database backup is required.
  - If the installer determines that there is no recent backup, it will display a dialog telling you to do a backup before proceeding.
  - If the installer is unable to determine when the most recent backup was, it will display a dialog telling you to check the date of the backup before proceeding.

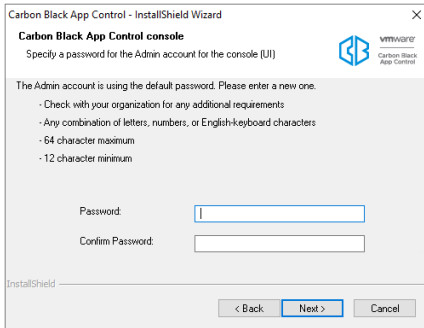
You have the option of cancelling the upgrade or continuing after these warnings. Continuing without a recent backup is *not recommended*.



- **Database Size Warning** – App Control Server upgrades can require a considerable amount of free storage space for the database. The installer attempts to confirm that there is enough space available for a database upgrade, and displays a dialog in these cases:
  - If it cannot determine whether there is enough space (for example, because it does not have privileges to view a remote database), it will display a dialog with the current database size, the estimated amount needed for an upgrade, and a recommendation to make sure there is enough space available.
  - If the installer can determine the free space available and determines that it is insufficient, it will display a Database Upgrade Size Warning dialog with the current and required amount of free space, and a warning that there is not enough space.

You have the option of continuing after either of these warnings, with or without remediating space issues. If the upgrade is continued and there really is not enough space, the upgrade program will exit and revert to the previously installed database and App Control (or Bit9 Platform or Parity) version.

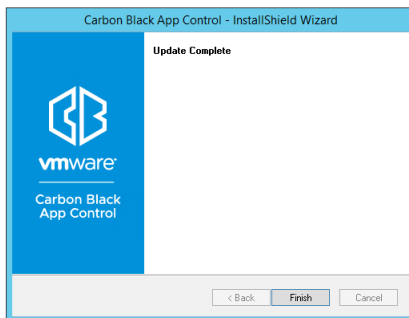
- **SQL Server Express** – If you are using SQL Server Express for your existing database and your database is larger than 4Gb, the upgrade installer will detect this and a dialog will warn you that your database may become unusable upon upgrade. You will have the option of continuing the upgrade, but you should consider upgrading to a full version of SQL Server, as specified in the *Operating Environment Requirements* for this release. SQL Server Express has a firm limit on the database size, and if you see this warning, you are almost certain to exceed that limit.
- **App Control Console Password** -- If the admin account is still using the default password from a previous release, a prompt displays requiring a new password.
  - You can specify any combination of letter, numbers, or English-keyboard characters
  - Password must be a minimum of 12 characters and a maximum of 64.



**Note** Use this password when you log onto the console user interface after the upgrade.

- **Database Update Failure** – If there is a failure in the database update portion of the server upgrade, different dialogs will be displayed depending upon the location of the failure. If the failure is potentially recoverable, you will be given the option of continuing. If it is not recoverable, you will see a message ending the upgrade and listing recommended steps.
- **API Errors** – If there have been any errors in the App Control API logged in the past seven days, the installer issues a warning and aborts the upgrade. API errors are logged in **php\_errors.log**, located in `<App Control installation folder>\Parity Console\WebUI\Logs\`. Beginning with v8.0.0, many functions in the App Control console depend upon the API, and upgrading with known errors could cause various problems. If you see this error message, consult the error log, and either diagnose and fix the API problems before continuing or contact Carbon Black Support for assistance in troubleshooting.

Upon completion of the upgrade, click **Finish** in the Update Complete dialog.



## Upgrade Completion

After the installer finishes and exits, the App Control Server starts running again and updates the existing agent installers for each policy and platform.

This process takes a few minutes, the exact time depending upon the number of policies you have. If you are refreshing the version of the App Control Agent installer on distribution points for a software deployment mechanism, make sure the agent installer has completed its upgrade before deploying it.



## Review Post-Upgrade Server Configuration

After you run the server upgrade installation, complete the following checklist prior to upgrading agents:

- Agent installers and rules are distributed separately from the App Control Server. Check the Carbon Black User Exchange to get the latest packages and upload them to your server once it is installed. Uploads can be performed by going to the console menu and choosing configuration ( **gear icon**) > **Agent / Rule Version Update** page in the App Control Console. See *Using App Control* (PDF or online help) for full instructions.
- In the **Rules > Software Rules** section of the App Control Console, review Updaters as necessary (e.g. to see any new updater versions or new updaters).
- In the **Rules > Software Rules** section of the console, if you upgraded the server on a system that is protected by the agent, and you disabled certain **Custom** rules to allow the upgrade to run, re-enable those rules.
- In the **Assets > Computers** section of the console, if you disabled tamper App Control on the server's agent during upgrade, open the Computer Details page for that agent and re-enable tamper App Control.
- In the configuration ( **gear icon**) > **System Configuration** section of the console, go to the **Advanced Options** tab, and modify the **Database Backup** configuration if necessary. Then re-enable backup.
- If you plan to use Reputation Approvals, it is better to enable it as soon as possible to avoid heavy network traffic later. This feature requires that you have Carbon Black File Reputation enabled (configuration ( **gear icon**) > **System Configuration > Licensing**). If you have it enabled, to access this feature, choose Rules > Software Rules on the console menu and click the Reputation tab. See "Reputation Approvals" in the *VMware Carbon Black App Control User Guide* guide for more information.
- Automatic Agent Upgrade is disabled in the server upgrade process. To re-enable:
  - Be sure that you have uploaded any new agent installer packages and rule files from the User Exchange and confirm that these are updating agent installers on the server.
  - Be sure that you have configured the policies you want to upgrade first for automatic upgrade, and those you don't need upgraded right away not to upgrade. Upgrading large numbers of agents at once can create a large load on the server.
  - In the **Administration > System Configuration** section of the console, choose the **Advanced Options** tab and re-enable automatic upgrades of agents.
- Automatic backup is disabled if a previous database was restored during the upgrade. If you use automatic backup and want to re-enable it, see "Backing Up the App Control Server" in the App Control Console help.
- If you use a third-party software distribution system to install App Control Agents, re-enable the distribution system and update the distribution points as the next section specifies.

- This release includes a System Health feature that monitors a variety of factors, including compliance of your system with the Carbon Black App Control *Server Operating Environment Requirements*. The indicators for this feature must be downloaded via Carbon Black File Reputation. See the *VMware Carbon Black App Control User Guide* guide or online help in the console for more information about enabling this feature.

## Agent Upgrade Status

To make the upgrade process easier to manage, the Computers page in the console provides an Upgrade Status column and also visually differentiates between computers running up-to-date agents and those running previous versions.

On this page, computers running previous agent versions show an yellow dot in the “Connected” column while up-to-date agents are shown with a blue dot. Disconnected agents show a grey dot.

Computers ?

Computers connected: 1 Total computers: 1 Current CL version: 1173 CL version for upgrade: 1172 Current Yara rule version: 1

Saved Views: (none) Saved View Name  Create Group By: (none) Ascending Days Disconnected: (none)

Show Filters Show Columns Export to CSV Refresh Table

Action Search: Enter Agent Version, C Automatically apply Showing 1 out of 1 item(s)

Select	Computer Name	Connected	Policy Status	Upgrade Status	Connected Enforcement	Disconnected Enforcement	IP Address	Policy
<input type="checkbox"/>	WORKGROUP\APC-42628	●	Up to date	Up to date	Low (Monitor Unapproved)	Low (Monitor Unapproved)	10.203.108.	APC-42628-fujfab

Showing 1 out of 1 item Showing all data

In addition, the Upgrade Status column in the Computers table shows a more detailed description of agent status as each agent goes through the upgrade process. Clients will transition to an Upgrade Status and Policy Status of “Up to Date” when all their upgrade processing has been completed.

See the *VMware Carbon Black App Control Agent Installation Guide* for addition information about automatic and manual agent upgrades, and about monitoring upgrade status.

# Uninstalling the App Control Server Software

# 5

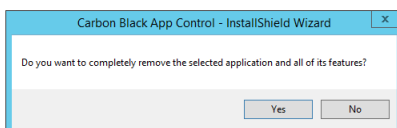
The server uninstallation program removes App Control files and associated third-party software installed on the system.

To uninstall the server, you must log in as a user with administrative privileges, preferably as the same App Control Server service user that was used to install the server. The uninstall program is on the Start > All Programs > **Carbon Black App Control** menu, although you can also use the Add or Remove Programs interface in the Windows Control Panel. Consider the following points before you uninstall:

- If you are uninstalling and do not intend to reinstall the App Control Server, place all policies in Disabled mode before uninstalling. Otherwise, computer users will not be able to uninstall the agent without special assistance. If you attempted to uninstall the App Control Server without changing all policies to Disabled mode first, contact Carbon Black Support.
- When you start the App Control Server installer/uninstaller program, it verifies that you have the permissions required to uninstall the App Control Server. If there are any rules or permissions prevent un-installation from going forward, the installer provides a report detailing what must be done before you can proceed. This includes blocks due to an enabled App Control Agent on the computer running the server and other folder or registry permission issues.
- Self-signed Carbon Black certificates are removed during the uninstallation process. If you used a certificate from a certificate authority (i.e. one that is installed in the Windows Certificate Store), it is not removed.

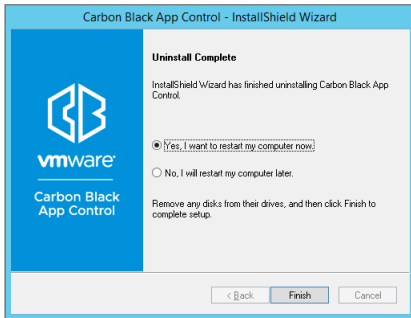
## To uninstall the App Control Server Server software

- 1 From the Control Panel, navigate to Programs and Features to uninstall a program.
- 2 Select **Carbon Black App Control** from the list and then click **Uninstall**. A confirmation dialog appears.



- 3 Click **Yes** to start the uninstallation process. When the uninstallation process is complete, either the dialog will close by itself or you will see the Uninstall Complete screen.

- 4 Generally, you do not need to reboot your system after uninstalling the server. If a reboot is necessary (which is true only if the uninstall program could not remove certain App Control files), the screen includes reboot options.



If the options appear, rebooting now is recommended unless you have other immediately necessary activity on the server (for example, an error in uninstalling).

- a Choose a reboot option if prompted.
- b Click **Finish**.

---

### Note

- For instructions on uninstalling the App Control Agent, refer to the *VMware Carbon Black App Control Agent Installation Guide*.
  - Uninstalling the server reverts the IIS configuration to its state prior to server installation. Any configuration changes applied during the time the server was installed are lost.
  - The server uninstall program will not remove the App Control database. It must be deleted separately.
  - If the FastCGI module was installed by the server installation program, the uninstall program presents a choice to un-install it or leave it installed once the server itself has been uninstalled.
  - Visual Studio 2012 and 2015 runtimes installed during server installation are not removed when you run the uninstall program.
  - If the Integrations folder in the App Control installation directory contains files that were not installed with the server, the folder and its contents are not removed when you uninstall the server. The Integrations folder can contain user data produced when App Control is integrated with third-party tools or CB Inspection.
-

# The App Control Console

# 6

This section explains how to log in to the App Control Console as an administrator.

Logged in as an administrator, you can configure almost all aspects of the system and create hierarchical user accounts. You can also add permissions for features not accessible to the administrator by default.

Read the following topics next:

- [Logging In to the Console](#)
- [Logging Out of the Console](#)
- [Changing the Administrator Password](#)
- [Viewing User Activities in the Events Table](#)
- [Using Help](#)

## Logging In to the Console

App Control employs a browser-based user interface called the *Console*. You can log in to the console from a supported web browser on any computer with network access to the server, including the server itself.

To use the console and online help, JavaScript must be enabled on your browser. In Internet Explorer, you may need to adjust your security settings or set the App Control address to be part of your Local Intranet or Trusted Sites zone in order to access the console. The security settings are accessed from the Internet Explorer Tools > Internet Options menu, on the Security tab.

For your initial login, you use the built-in administrator account, `admin`.

### To log in to the App Control Console:

- 1 From a supported web browser, enter the fully qualified domain name or alias of the App Control (IP addresss may be used but a FQDN or alias is preferred):

```
https://server_name
```

If you installed a verifiable digital certificate from a third-party authority as part of server installation, you go directly to the login screen (step 3).

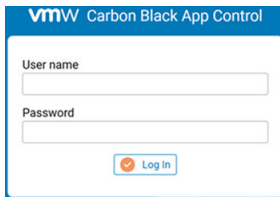
- If you chose the Carbon Black self-signed SSL certificate during server installation, the first time you enter the server URL, a certificate error appears. You can safely ignore the warning and click through the remaining confirmation screens. The warning appears because the authority of the self-signed certificate cannot be verified.

---

**Note** To avoid future certificate warnings:

- In Firefox, accept the certificate permanently.
  - In Internet Explorer, click through the warning, click the Certificate Error button in the IE toolbar, and install the self-signed certificate.
  - In Safari, click Show Certificate on the warning and check the Always trust... box for the Carbon Black certificate, and click Continue.
- 

- In the login screen, enter the default user name `admin` and password you specified during installation.



Click the **Log In** button.

The App Control Home page displays.

You should be able to view the entire top menu bar, from the logo on the far left to the help icon and the name of the currently logged on the far right.



If you are not able to see all of the items on the top menu, adjust the zoom or resolution on your browser. This may be necessary on smaller laptop or tablet displays.

You should change the password for the `admin` account after logging in. See [Changing the Administrator Password](#).

---

**Note** For environments that require best security practices, Carbon Black recommends using AD-based login accounts. You can also use SAML to require two-factor authorization for console logins.

See the separate *VMware Carbon Black App Control User Guide* guide for more information about AD-based and SAML logins.

---

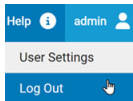
The console automatically logs users out after a specified period of inactivity. This can be modified on the System Administration page Advanced Options tab. You can modify the default starting page for the console using the dialog that appears when you choose **Tools > Preferences** on the console menu. See the online help in the console for additional information.

## Logging Out of the Console

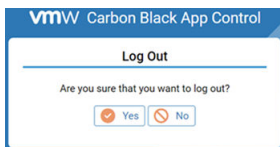
On every page of the console, a log out command is available on the user name menu in the top right corner of the banner of the console web page. Logging out ends your session.

### To log out of the App Control Console:

- 1 In the user name menu at the top right corner of console menu, choose **Log Out** (with the default login, this menu will show as “Admin”):




- 2 Respond to the confirmation prompt:



## Changing the Administrator Password

For security, regularly change your administrator password.

### To change the default administrator password:

- 1 On the configuration (gear) menu in the top right area of the console menu, choose **Login Accounts**.
- 2 On the Login Accounts page, click the **View Details** button  next to the `admin` user.
- 3 On the Edit Login Account page, change the password as follows:
  - a In the **Password** field, enter the new password.
  - b In the **Confirm Password** field, enter the password again.
  - c Click the **Save** button.

---

**Note** An App Control administrator can use this same series of steps to change the passwords of other users if their accounts were created in the console. If a user logged in to the console with an AD user account, that user’s details, including password, cannot be individually modified in the console.

---

## Viewing User Activities in the Events Table

You can review the combined event and exception logs in the App Control Events table. Messages include a record of user actions, including logins, new users created, and changes to user accounts.

### To view App Control Server activities:

- 1 On the console menu, choose Reports > **Events** . The Events page appears, and by default shows All Events in the past hour in the table at the bottom of the page.
- 2 If you want to see a subset of the available events, you can make a choice on the Saved Views menu or create a special view using Show/Hide Filters and Show/Hide Columns.
- 3 If you want to use a different time range, choose a time from the Max Age menu, or click the Show/Hide Filters link to configure and Apply a more complex time range. The report table at the bottom of the page updates to show the new time range.

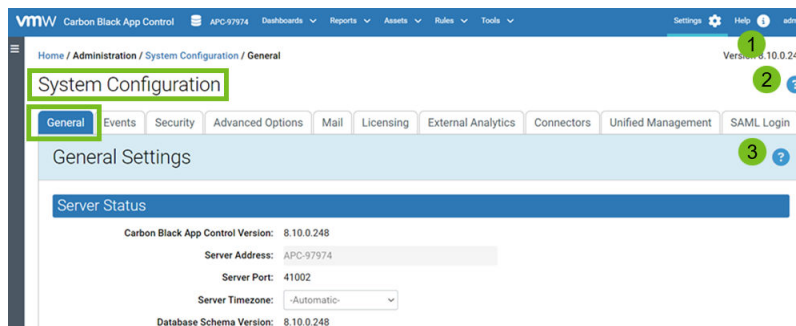
The *VMware Carbon Black App Control User Guide* guide, available as a separate document or through online help in the console, provides more details about events:

- See the topic “Event Reports” for information other event report types and views.
- See the topic “Managing the App Control Event Database” for information about event log management and configuring the App Control Server to send events to a Syslog server .

## Using Help

The console provides an online version of *VMware Carbon Black App Control User Guide*, which is also available as a PDF file.

- When you click the Help information button in the top right of the console menu, the online help opens with an introductory screen and a table of contents.
- When you click a question mark button in one of the panels lower down on a page, the topic relevant to that page appears in addition to the table of contents.



### 1: App Control Help

The Help information button displays the Home page and table of contents for App Control Help.

### 2: Page help

The question mark button on the right of the page title displays a context-sensitive help topic relevant to that page.

### 3: Current view help



The question mark button on the right of the selected tab displays context-sensitive information or a help topic relevant to that tab.

**To display online user documentation from the console:**

Launch help in the following ways:

- Click the Help information button in the top right of the console menu.
- Click the context-sensitive help button on the right opposite a page title.

App Control help is displayed in a new window or tab. The controls on the help page, and their location, vary depending upon the size of the window, but all pages provide access to the index, table of contents, and search features.